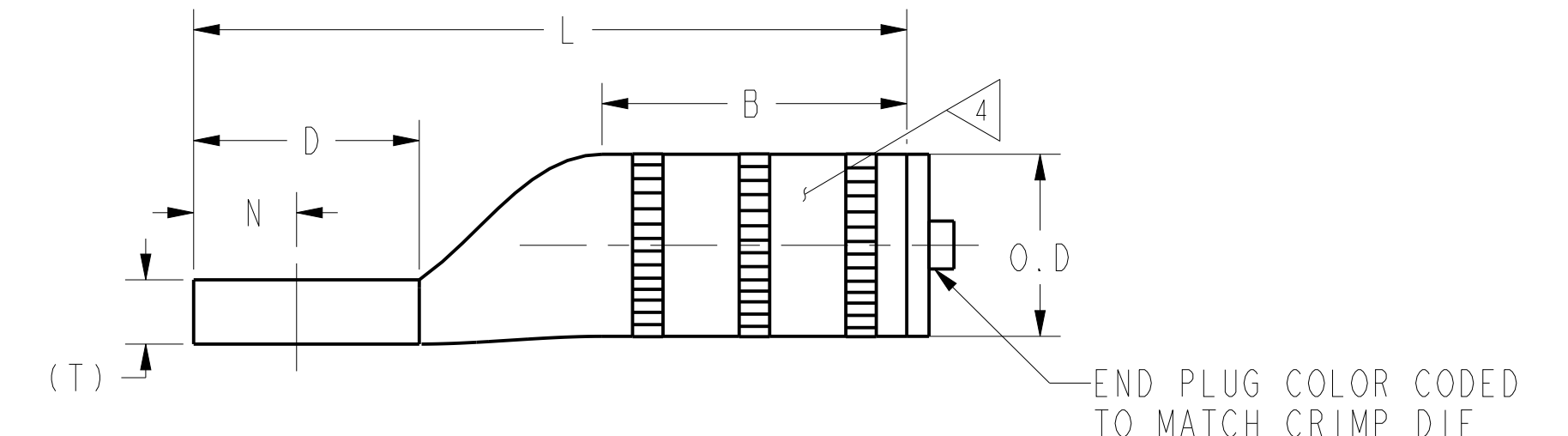
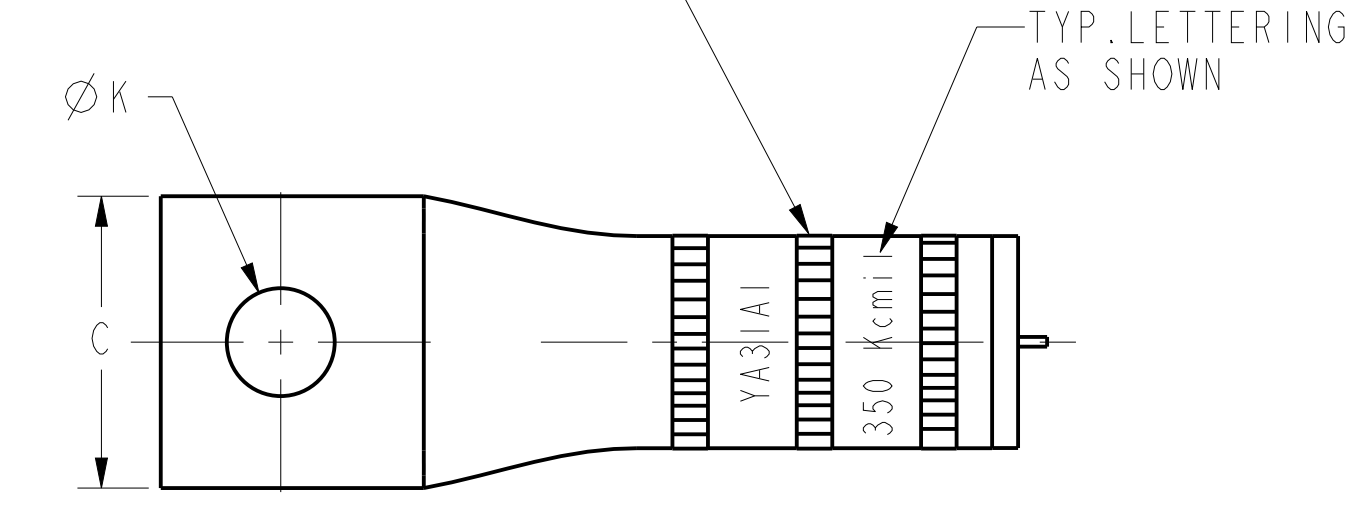


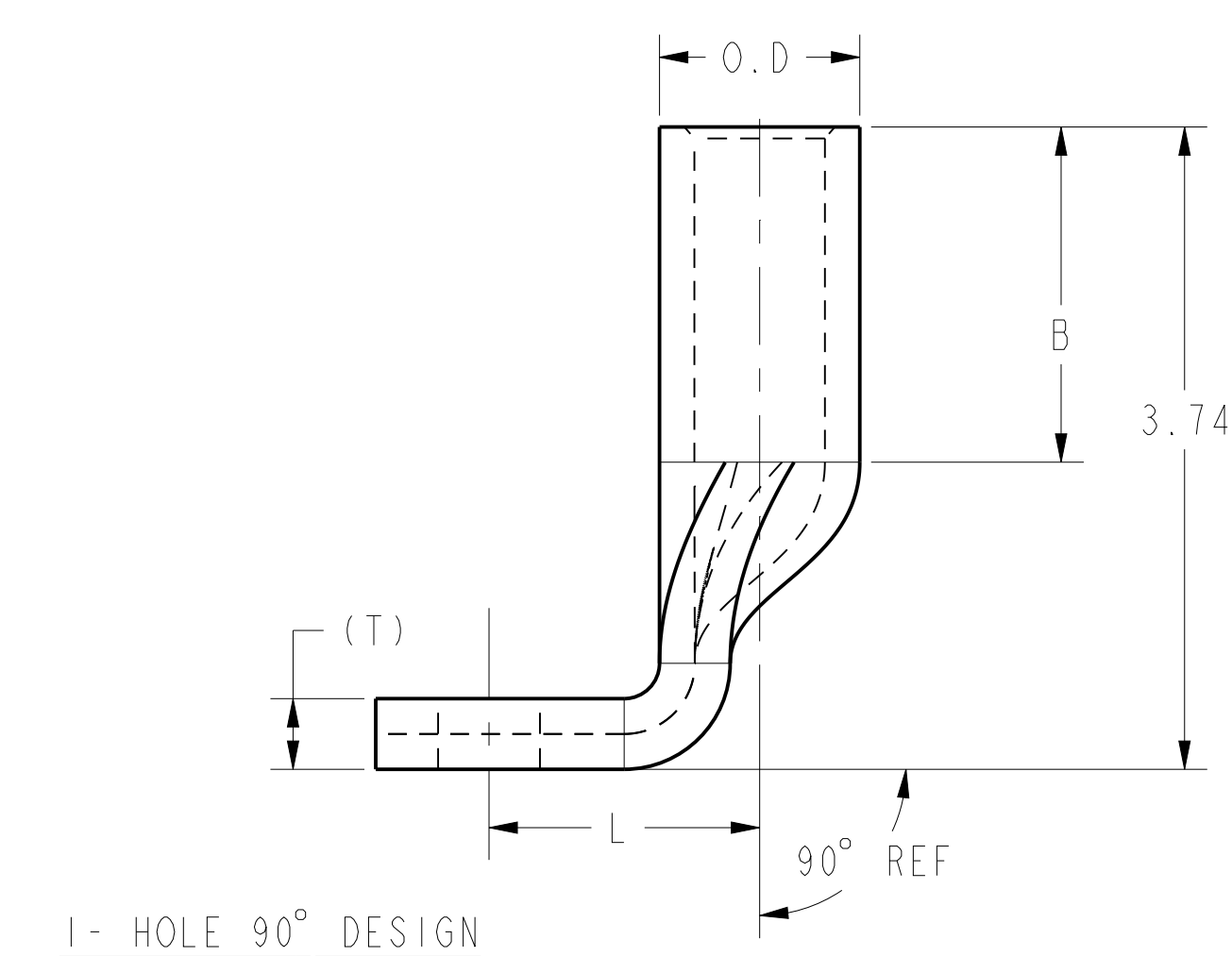
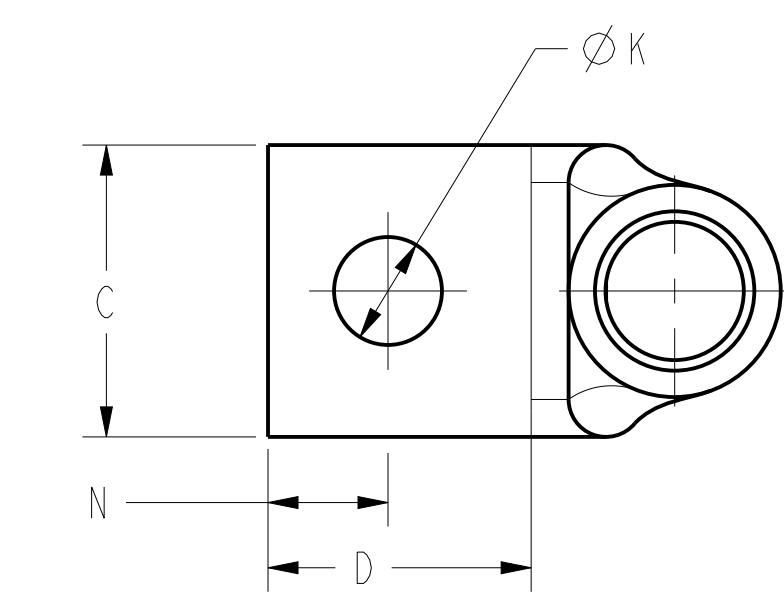
REV	DATE	DESCRIPTION	ECO	BY	C.H.K.
AJ	09/15/2015 00:00:00 AM	ROLLMARKING DETAILS UPDATED	41819	NG	RG

CATALOG NUMBER	CONDUCTOR SIZE		CONNECTOR DIMENSIONS-LINEAR MEASURE IN, [mm]											INFORMATION	BARREL LETTERING INFORMATION
	ALUMINUM	COPPER	STUD SIZE	NO. OF HOLES	B	C	D	E	Ø K	L	N	O.D.	(T)		
YA31A1			1/2	1	1.85 [47]	1.52 [39]	1.37 [35]	--	.56 [14]	4.33 [110]	.63 [16]		.39 [10]	TIN	FIG. 1
YA31A2			1/2	1	1.85 [47]	1.52 [39]	1.37 [35]	--	.56 [14]	4.33 [110]	.63 [16]		.39 [10]	NONE	FIG. 2
YA31A3			1/2	2	1.85 [47]	1.52 [39]	3.11 [79]	1.75 [44]	.56 [14]	6.07 [154]	.63 [16]		.39 [10]	TIN	FIG. 1
YA31A4			1/2	2	1.85 [47]	1.52 [39]	3.11 [79]	1.75 [44]	.56 [14]	6.07 [154]	.63 [16]		.39 [10]	NONE	FIG. 2
YA31A5			3/8	2	1.85 [47]	1.52 [39]	1.89 [48]	1.00 [25]	.44 [11]	4.85 [123]	.44 [11]	1.11 [28]	.39 [10]	TIN	FIG. 1
YA31A5NT119			3/8	2	1.85 [47]	1.00 [25]	1.89 [48]	1.00 [25]	.44 [11]	4.85 [123]	.44 [11]	1.11 [28]	.39 [10]	TIN	FIG. 2
YA31A5NT100			3/8	2	1.85 [47]	1.00 [25]	1.89 [48]	1.00 [25]	.44 [11]	4.85 [123]	.44 [11]	1.11 [28]	.39 [10]	NONE	FIG. 2
YA31A6			3/8	1	1.85 [47]	1.52 [39]	.89 [23]	--	.44 [11]	3.85 [98]	.44 [11]	1.11 [28]	.39 [10]	TIN	FIG. 1
YA31A9NT100			3/8	1	1.85 [47]	1.00 [25]	1.89 [48]	--	.44 [11]	4.85 [123]	.44 [11]	1.11 [28]	.39 [10]	TIN	FIG. 2
YA31A12			5/8	1	1.85 [47]	1.52 [39]	1.37 [35]	--	.65 [17]	4.33 [110]	.63 [16]	1.11 [28]	.39 [10]	TIN	FIG. 1
YA31A190			1/2	1	1.85 [47]	1.52 [39]	1.37 [35]	--	.56 [14]	2.12 [54]	.63 [16]	1.11 [28]	.39 [10]	TIN	FIG. 1

USE KNURLED GUIDE LINES FOR CRIMP SPACING

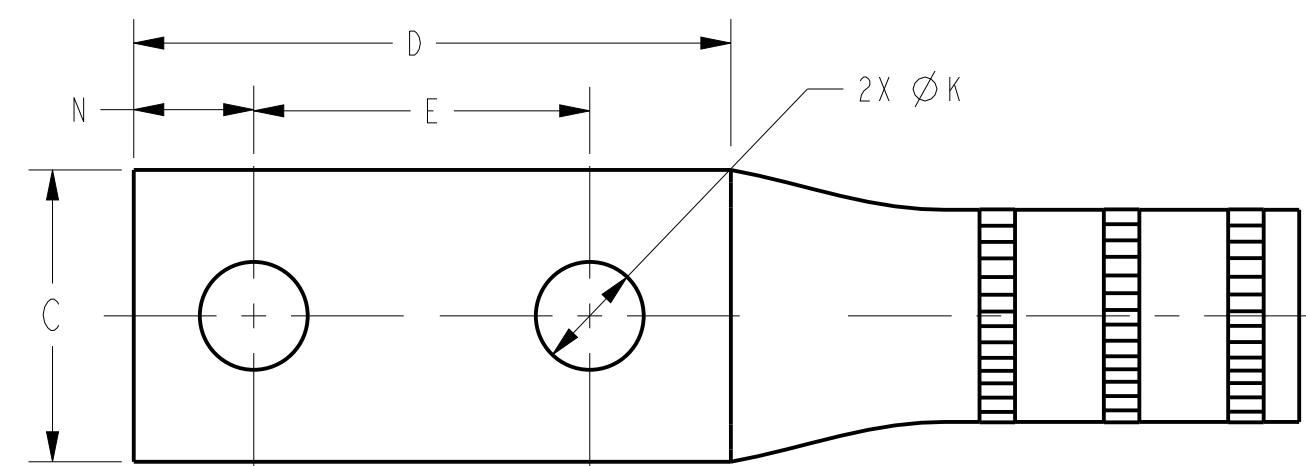


1- HOLE DESIGN



1- HOLE 90° DESIGN

COLOR CODE	BURNDY® INSTALLATION TOOLING (#CRIMPS)										DIELESS (#CRIMPS)		STRIP LENGTH
	DIE INFORMATION		MECHANICAL		HYDRAULIC						MECHANICAL	HYDRAULIC	
	DIE INDEX	TYPE	OUR840	MD6	10 Y34A Y34B	9 Y35, Y39 Y750 PAT750	9 Y46	9 Y45	Y48BH	Y60			
BROWN	299	BROWN DIE SET	--	--	--	U31ART (2)	U31ART (2)	U31ART (2)	C31ART (1)	--	--	Y81KFT (3) PAT81KFT (3) Y644 (1) PAT644 (1)	2 1/8"
BROWN	299	NEST INDENTOR	--	--	--	--	P35D(1) P48PR-1	--	C35D(1) Y48PR-1	--	--	--	2 1/8"



2- HOLE DESIGN

- NOTES:
- ALL HYLUGS™ ACCOMMODATE U.S. STANDARD WASHERS.
  - REMOVE ALL EXCESS PENETROX™ FROM CONNECTOR AND ADJACENT CONDUCTOR PRIOR TO TAPING.
  - UL LISTED AND CSA CERTIFIED WIRE CONNECTORS. RATED 90 C (AL9CU) FOR USE WITH COPPER OR ALUMINUM CONDUCTOR. APPROVAL APPLY TO TIN PLATED CONNECTORS ONLY.
  - CONNECTOR BARRELS PREFILLED WITH PENETROX™.
  - DIMENSIONS IN BRACKETS [ ] ARE IN MILLIMETERS ROUNDED OFF TO THE NEAREST MILLIMETER, UNLESS OTHERWISE NOTED, AND ARE FOR REFERENCE ONLY.
  - ADD SUFFIX "DT" TO ORDER LUGS WITH CRIMP BARREL SEALED AIR TIGHT INSIDE THE TRANSITION.
  - CATALOG #PT6515 ADAPTOR IS REQUIRED TO USE "U" DIES IN Y45 SERIES TOOLS.
  - CATALOG #PUADP-1 ADAPTOR IS REQUIRED TO USE "U" DIES IN Y46 SERIES TOOLS.
  - Y35P3 INDENTOR ADAPTOR REQUIRED FOR "Y34PR" TYPE INDENTORS.
  - FOR USE BY CUSTOMERS THAT HAVE THIS HYPRESS™. NO NEW HYPRESSES™ ARE BEING PROCESSED.
  - UL LISTED WITH DLO COPPER CLAD ALUMINUM CONDUCTOR USING Y644 TOOLS ONLY.
  - ADD SUFFIX "U" TO ORDER LUGS WITH UNDRILLED TONGUE.
  - ENLARGED BARREL MARKING VIEWS.

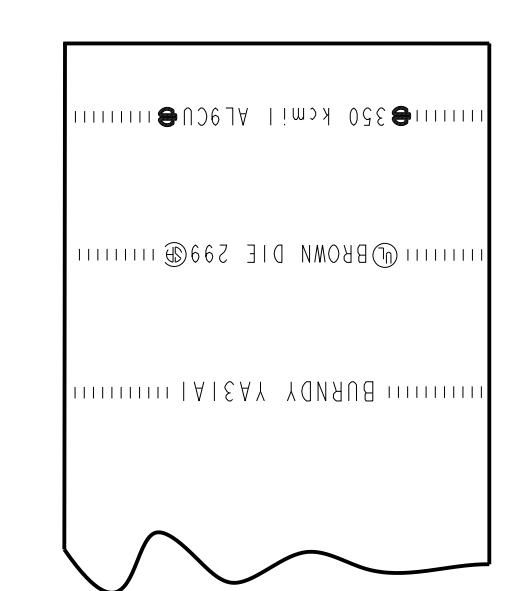


FIG. 1

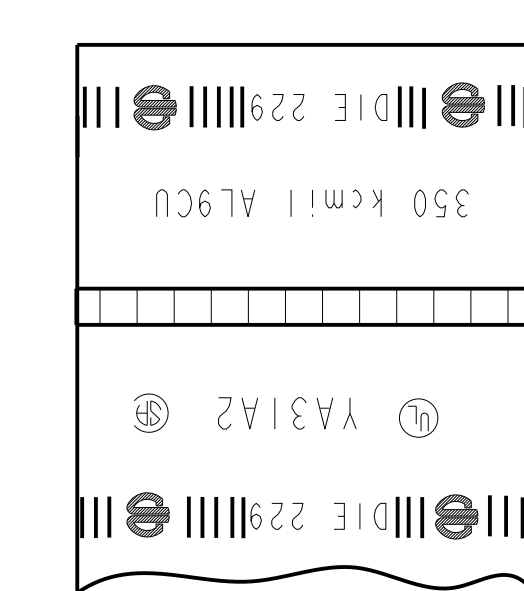


FIG. 2

DEVELOPED LETTERING VIEWS

UNINSULATED COMPRESSION TERMINAL MATERIAL: ALUMINUM TUBE

HYLUG™	
ITEM NO:	N/A
CAT. NO:	YA31A-(SEE TABLE)
DRAWN BY:	E.S.K 7/21/72
CHECKER:	S.F.P 8/01/72
DSN APPVL:	R.B 8/02/72
MFG APPVL:	--
QA APPVL:	D.VARIO 6/18/95
MKT APPVL:	P.WERTHMAN 6/18/95
PROD FAM:	--
PROJECT #:	--
DOCUMENT TYPE:	Sales
REL LEVEL:	Released



SCALE:	1:1
DRAWING NO:	SD073935
SHEET:	12 OF 24
REV:	AJ

REV: PEC200